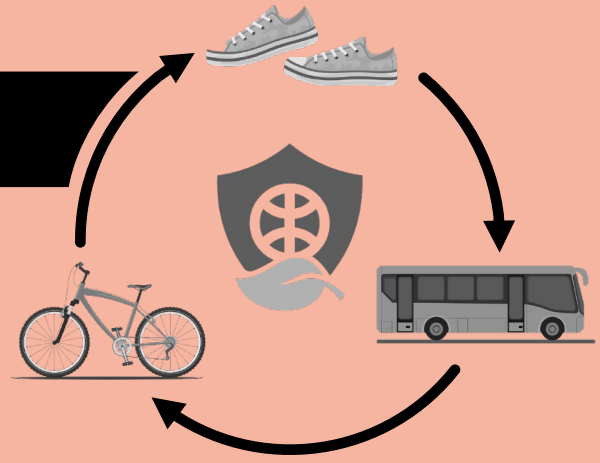


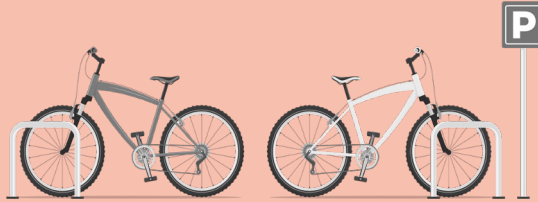
Mobility Concept



In order to make the journey to Tempelhof Lab as climate-positive as possible, a mobility concept was developed with many alternative travel options. The arrival and departure of visitors as well as band and crew members is one of the biggest levers to make a large event more environmentally friendly and to save emissions.

1 Arrival by bike

Travel by bicycle and on foot was made much more attractive by the urban location of the concert site, the extensive availability of bicycle parking spaces, and the decision not to actively designate parking spaces for motor vehicles, so that **~19% of the 240,000 visitors traveled to their concert on foot or by bicycle**¹⁾. Monitored parking facilities for bikes allow visitors to enjoy concerts without any worries.



¹⁾This figure is based on the assumption that visitors had already arrived at the time of cancellation.

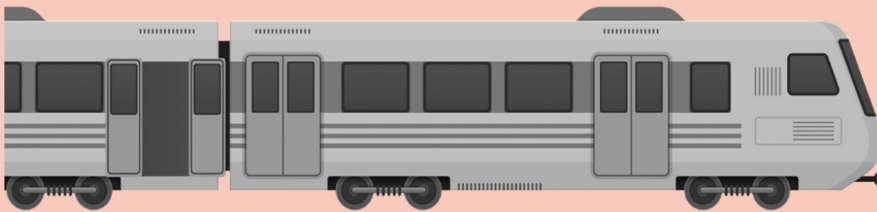
Conventional concept: Predominantly providing car parking spaces and little space for alternative travel options.

Tempelhof Lab: Incentives for travel by train, public transport, on foot and by bicycle. Offer bicycle parking spaces.

Ideal concept: Car parking only for people with disabilities. Visitors travel exclusively by train, public transport, on foot or by bicycle.

2 Public transport ticket

By including a public transportation ticket in the event ticket, **~65%* of the 240,000 event attendees traveled to the concert by public transportation.**



*This figure is based on assumptions made in the event impact model. In addition, the concerts took place during the period of the 9-Euro-Ticket in Germany.

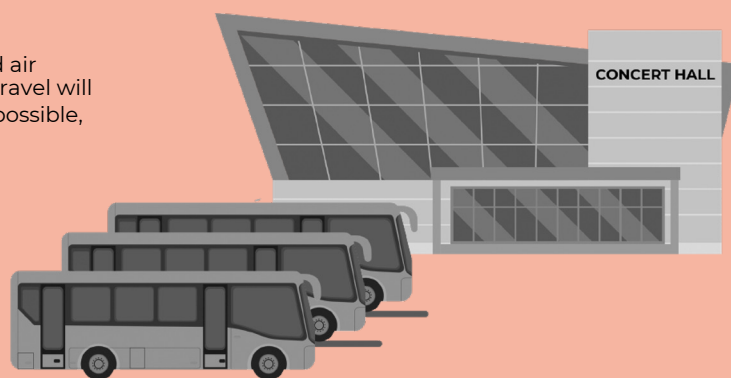
Conventional concept: Only limited promotion of travel by public transport.

Tempelhof Lab: Inclusion of a public transport ticket in the event ticket.

Ideal concept: Include long-distance tickets in the event ticket.

3 Artists & Crew

Bands & crew should avoid air travel wherever possible. Travel will be by train and/or, where possible, electric shuttles.



Conventional concept: Only conditional promotion of sustainable travel of the crew & artists.

Tempelhof Lab: Travel options by train and/ or e-shuttle. No-Fly-Policy for the journey to the four concerts.

Ideal concept: Travel exclusively by train/public transport. Touring with electrically powered buses.